



SPINNING THE BUSH JOBS "BOOM"



*A Report by Scott Lilly
Senior Fellow*



Was the Bush “*Job Boom*” Merely Hype?

The economic downturn that began in March of 2001 has differed dramatically from other business cycles of the past 60 years. Most troubling has been the extended period of declining employment levels (continuing for 31 months from the beginning of the downturn or for a period about three times longer than the average of other business cycles during the past 60 years) and the weakness in the pace of job recovery after employment levels finally hit bottom in August 2003. It was not until this spring that the labor Department began to report significant employment gains with 353,000 jobs added in March and somewhat slower growth in April and May.

Vice President Cheney extolled the monthly job figures, *"American businesses have created jobs for nearly a million workers in the last 100 days alone, and we've added over 1.4 million jobs since last August."*

Supporters of administration tax policies were even more enthusiastic about the job numbers. Writer Jerry Boyer stated, *"For the month of March, the Bureau of Labor Statistics has reported a massive increase of 308,000 new jobs in the payroll survey...now the payroll survey is booming too,"* and *The Washington Times* ran a headline **"A Jobs Boom Bounce."**

Supply-side economic commentator Lawrence Kudlow reported, *"At his rate, budget deficits will evaporate rapidly as the economy quickly marches toward full employment."*

Scholars at The Heritage Foundation also joined in the exaltation:

This is the first time in years that the labor markets show universally positive gains in every area—job growth, wages, and hours—in almost all sectors and across all demographics. The U.S. economy is moving from recovery into a self-sustaining expansion.

A Web site supportive of the administration used the jobs data to go on the attack:

Contrary to Kerry's hyperbolic claims the economic conditions under which we currently live should be heralded by the mainstream press as a Golden Age... Take for example the extraordinary news released today about jobs from the Department of Labor. The great American job creating engine added 288,000 new jobs in April alone.

There were of course a number of other statistics that were left out of these reports including the continuing decline in real wages and the decline in average hours worked. But another

question that escaped scrutiny was how big this “boom” really was compared to job growth before the “golden age.”

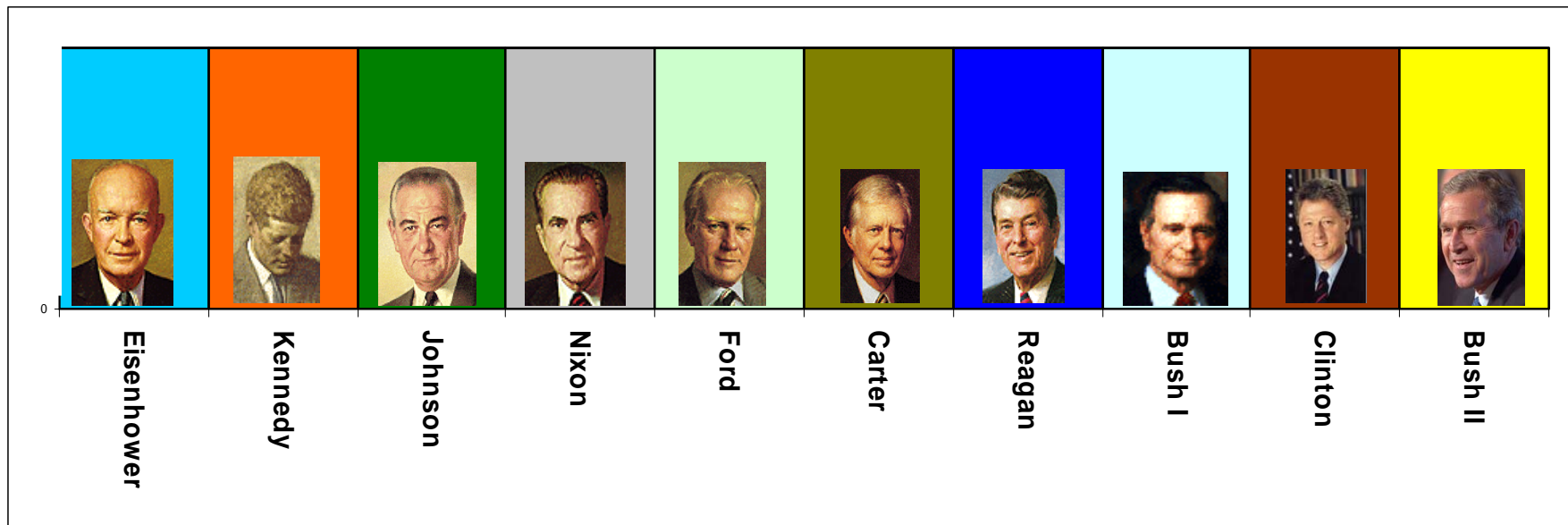
One reason for the enthusiasm for the spring employment numbers is the almost unprecedented decline in employment that occurred during the previous three years. But how do these months compare to other periods over the past half century?

During the first six months of 2004 employment grew from 130,035,000 in December to 131,301,000 in June or by 0.97%. Is that significantly better than previous six month periods? The answer is no. When compared to the first and last six months of each year for the last 50 years, this past six months ranks 59th out of the 100—in other words not only not great, but not even quite middling.

Does the performance improve if we examine only the last quarter? The second quarter was a little better than the first

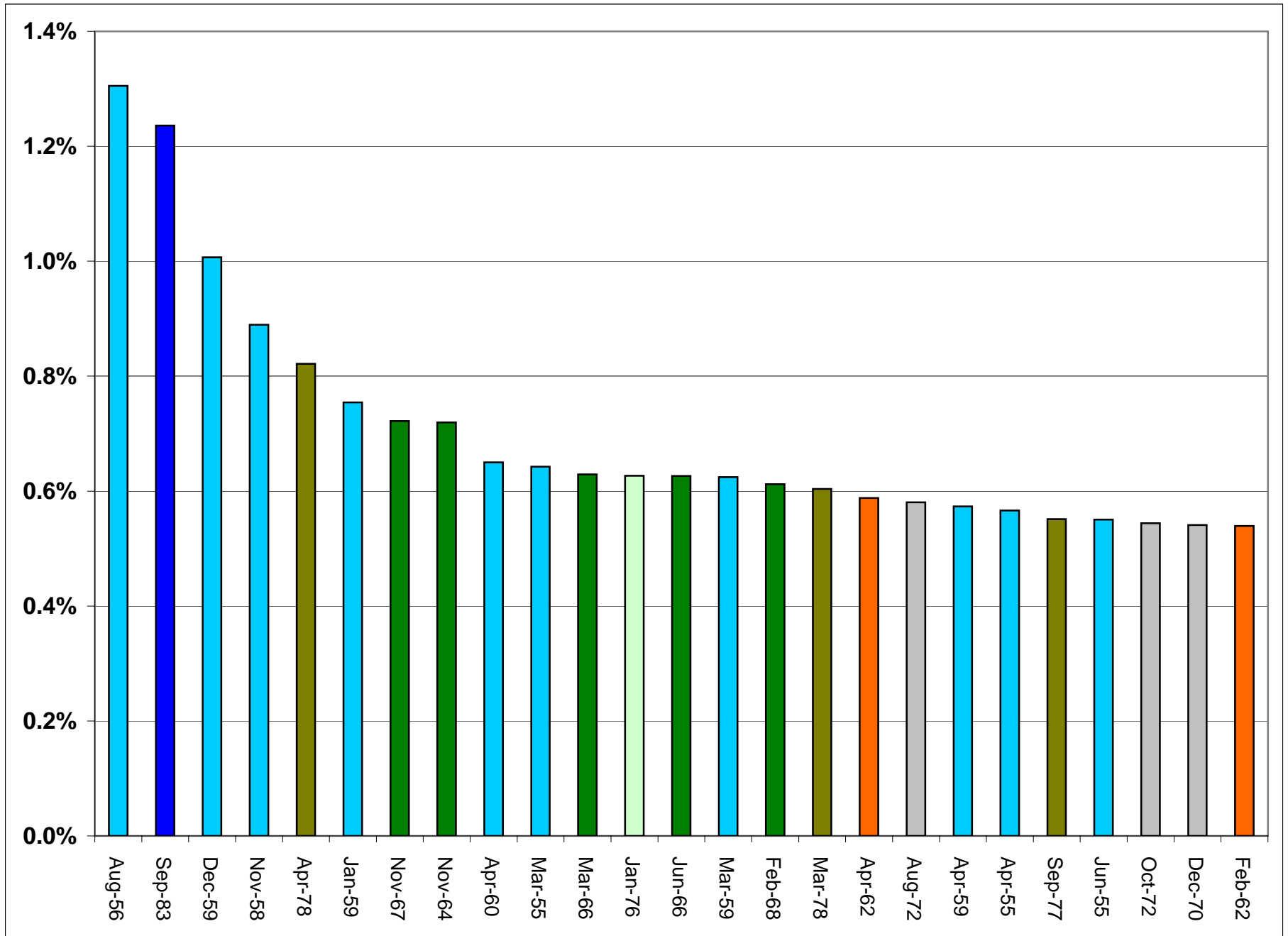
and certainly was the best of this administration. But a very similar comparison emerges for the second quarter when compared to the 199 other quarters in the last 50 years. The 0.51% increase in employment in the second quarter of 2004 was exceeded by 116 of the 199 other quarters. Again, a performance that did not reach the median for job growth.

Even so March was a very good month, 353,000 jobs—right? To answer that question we calculated the percentage growth of the labor force in every month for the last 50 years and sorted the months from best to worst. We also color coded the months based on the administration that was in office at that particular time. Eisenhower is light blue; Kennedy is orange and so forth. The Bush II administration is yellow. Of the 600 months analyzed, only 225 are represented in the graphs but all are represented in table at the end of the report.



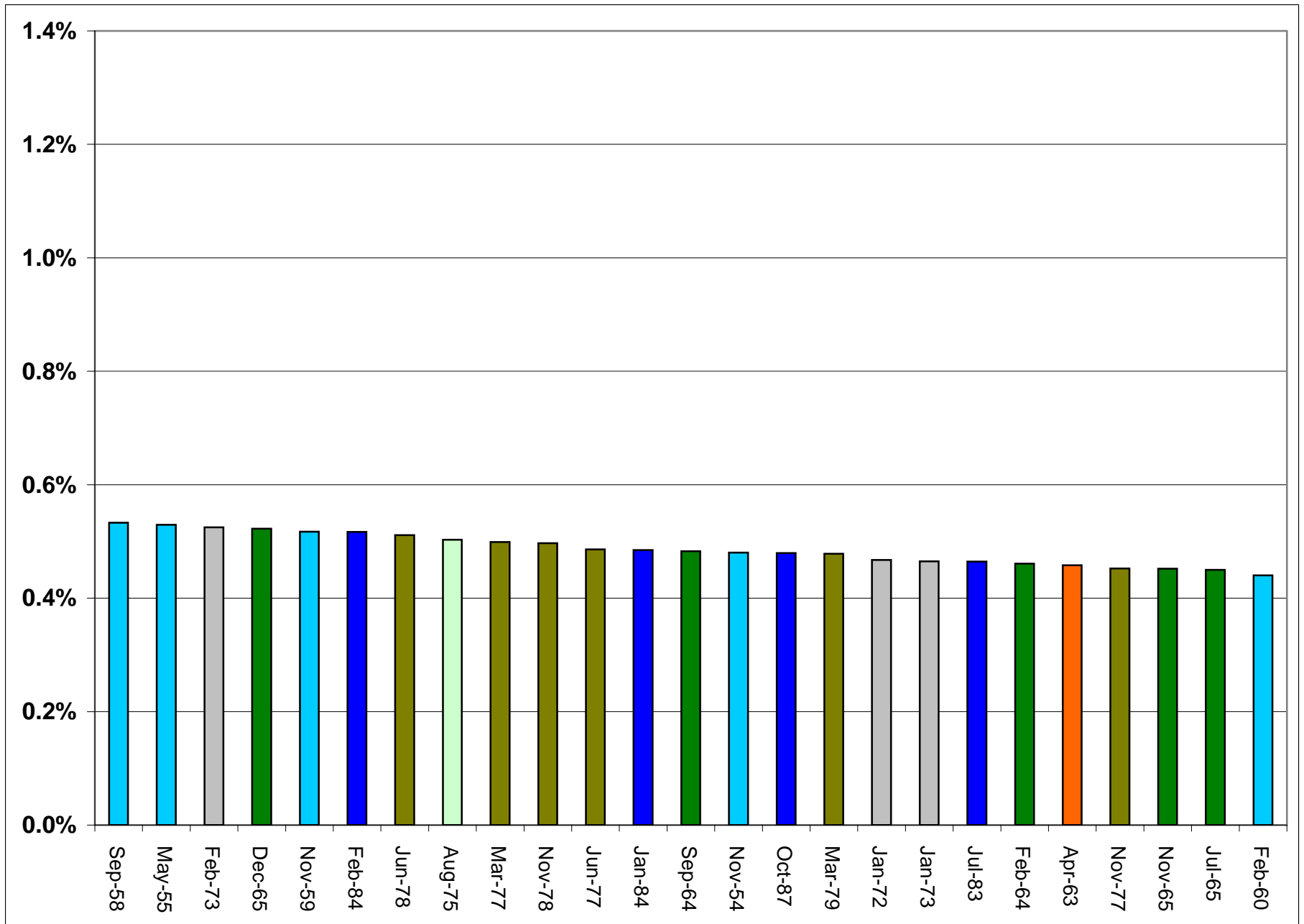
Best 25 Months of Job Growth During Last 50 Years

(Bush Months Displayed in Yellow)



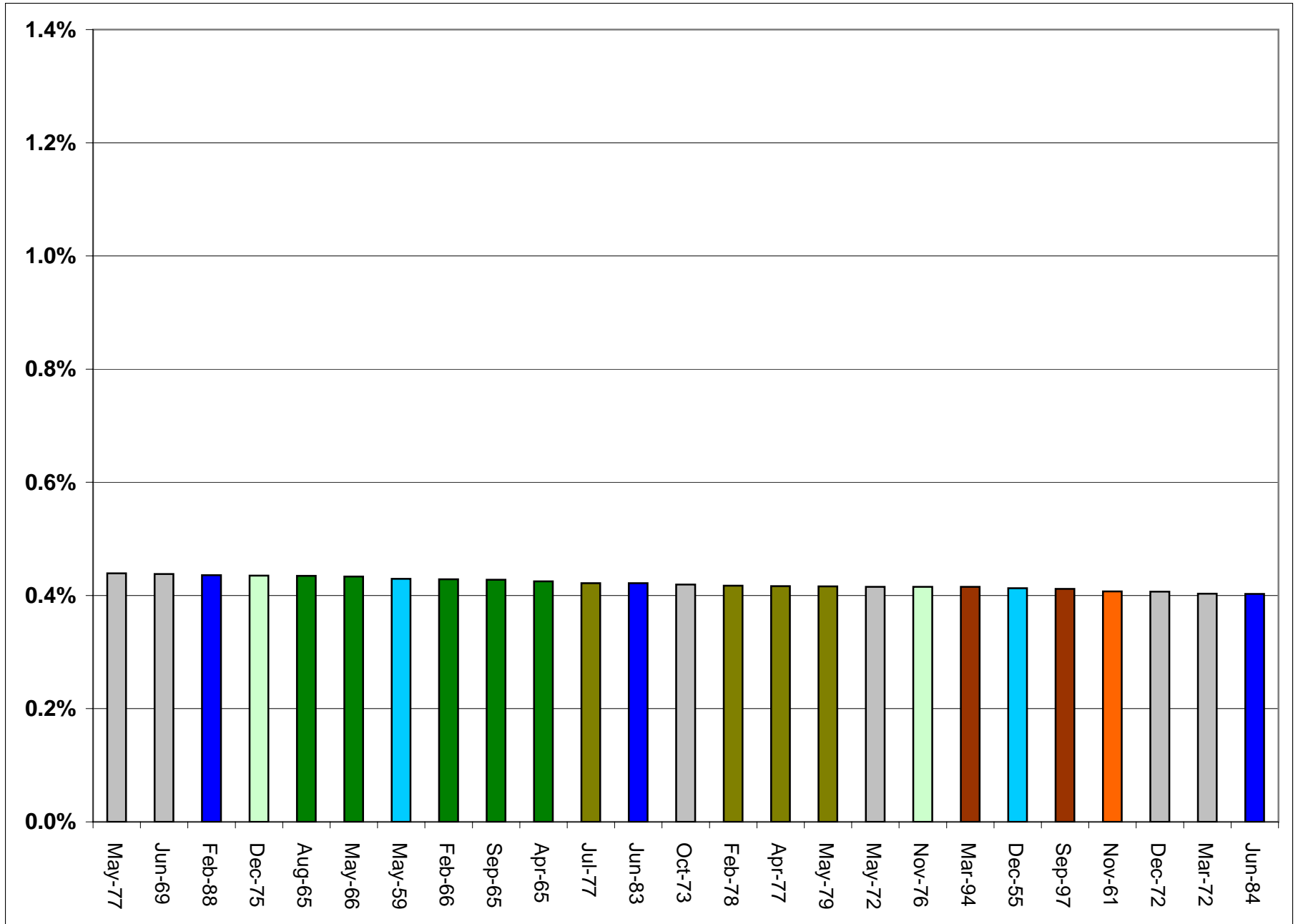
Second Best 25 Months of Job Growth During Last 50 Years

(Bush Months Displayed in Yellow)



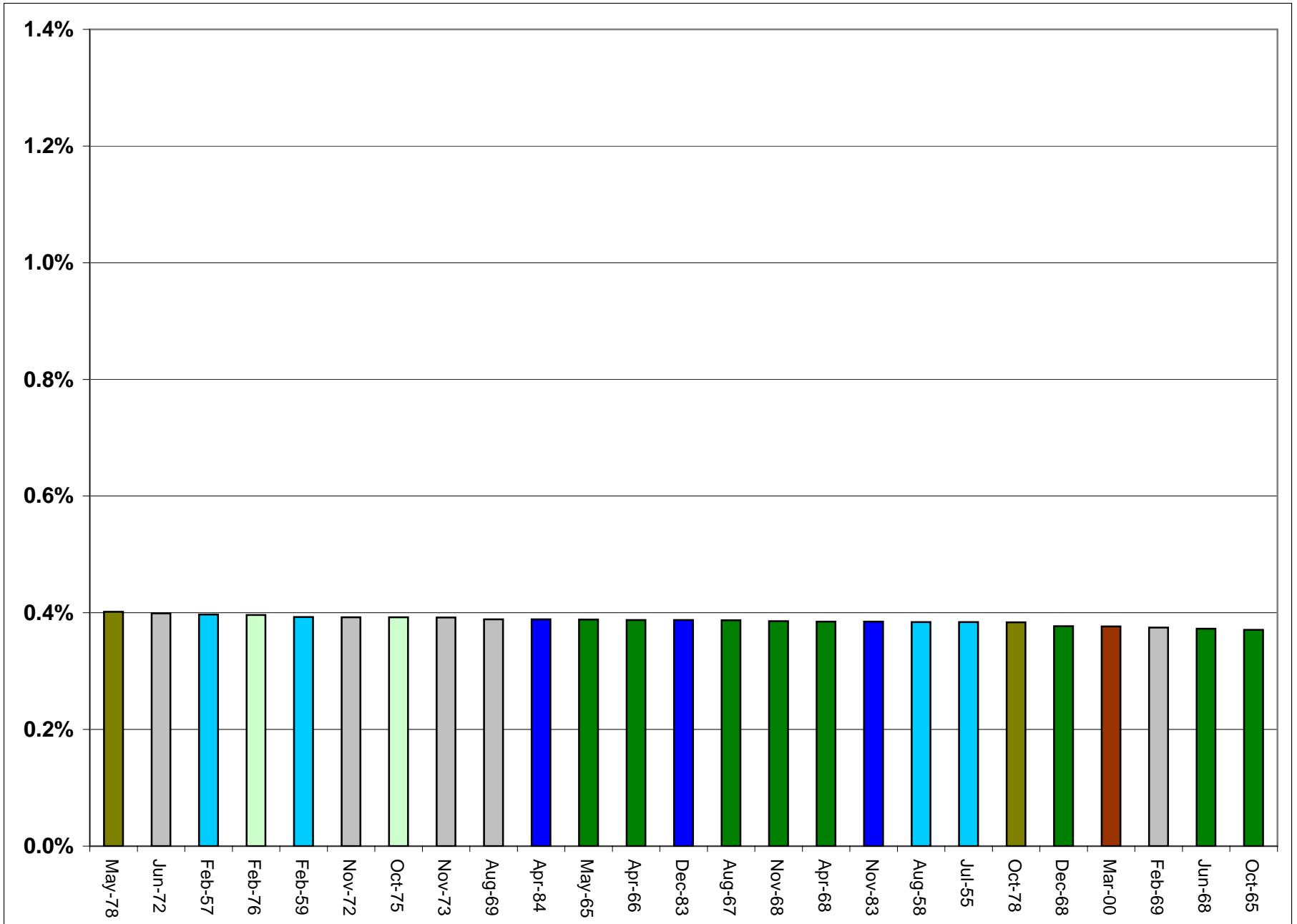
Third Best 25 months of Job Growth During Last 25 Years

(Still No Yellow)



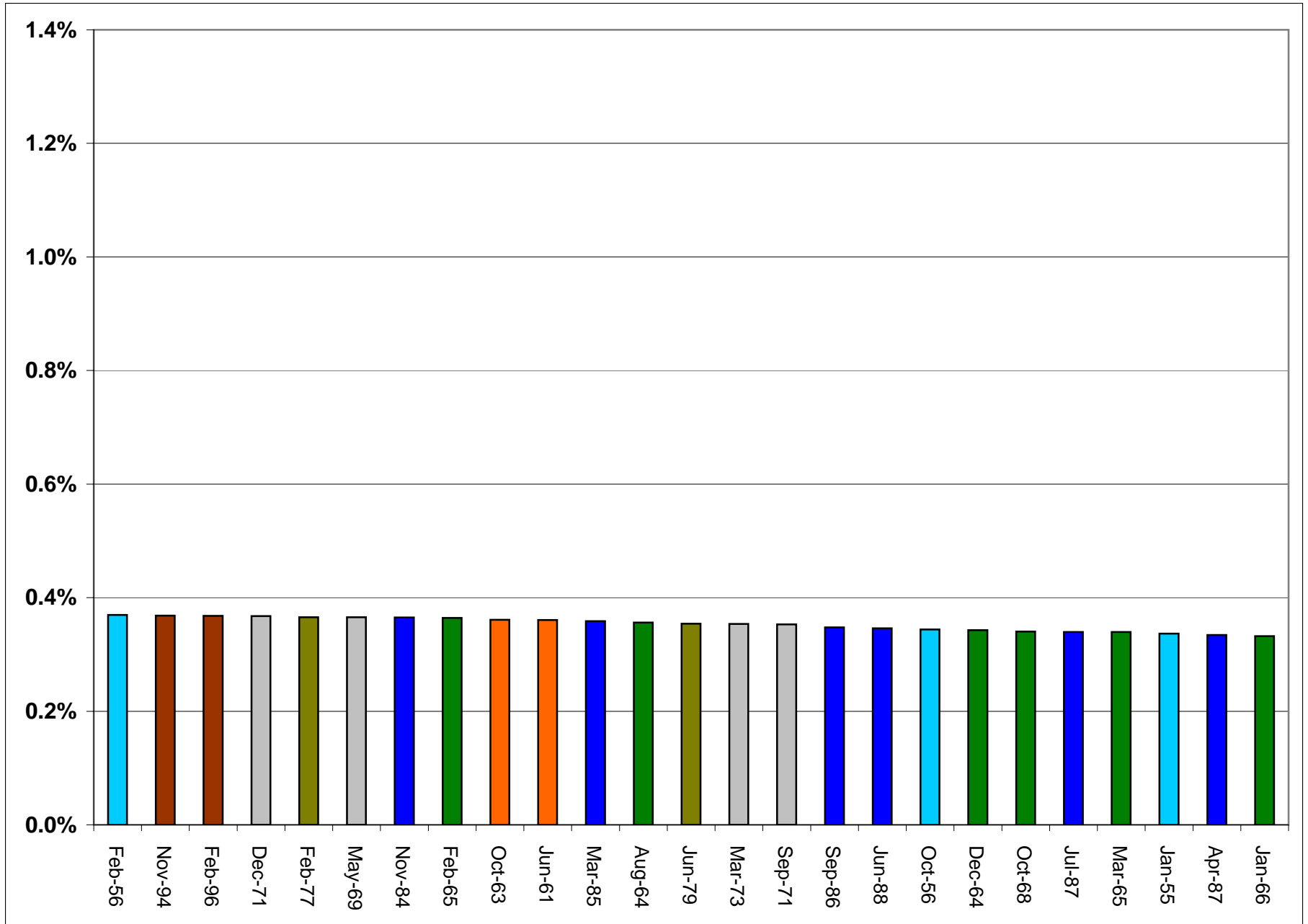
Forth Best 25 months of Job Growth During Last 25 Years

(Still No Yellow)



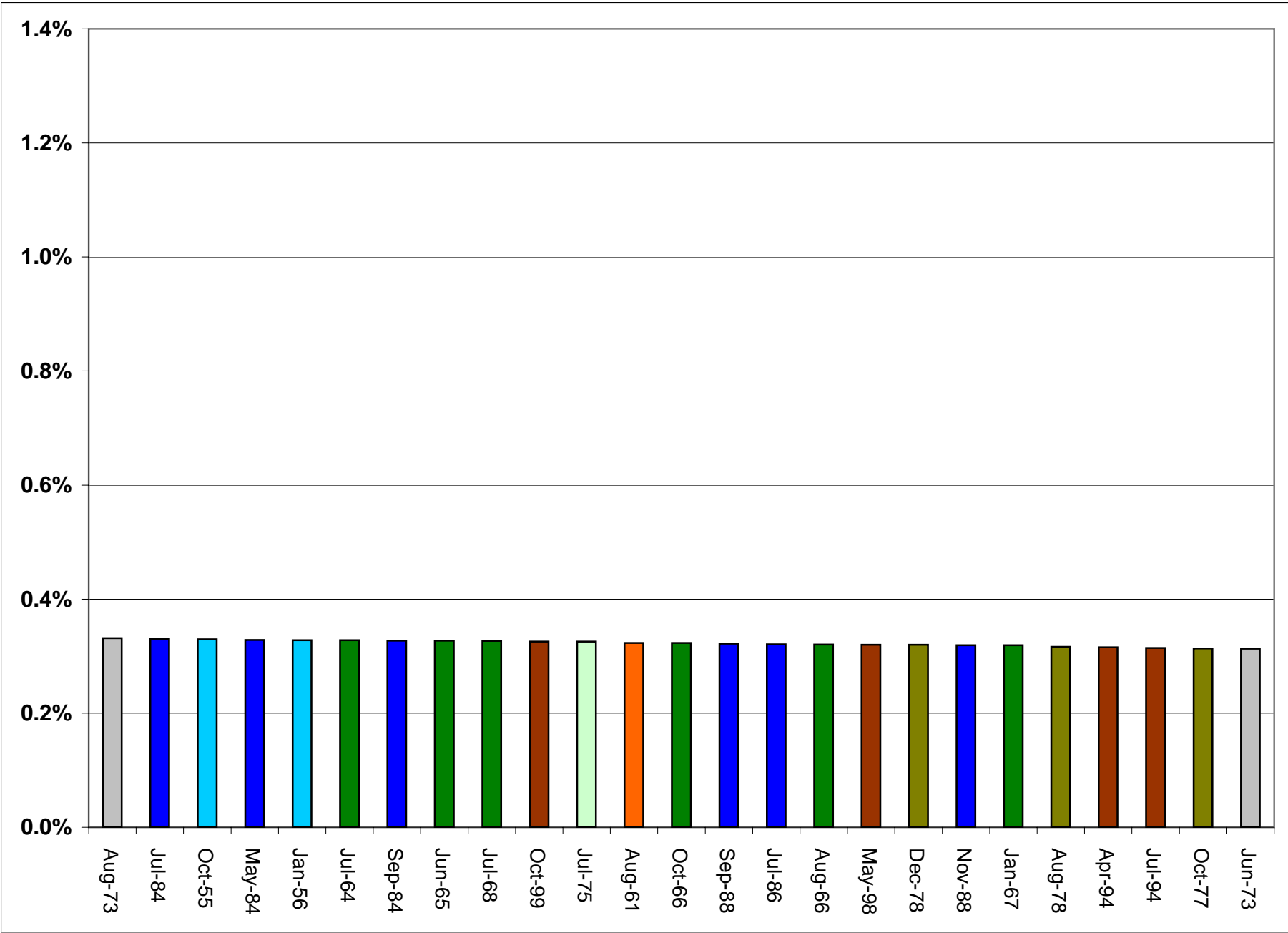
Fifth Best 25 Months of Job Growth During Last 25 Years

(Still Looking for the Yellow)



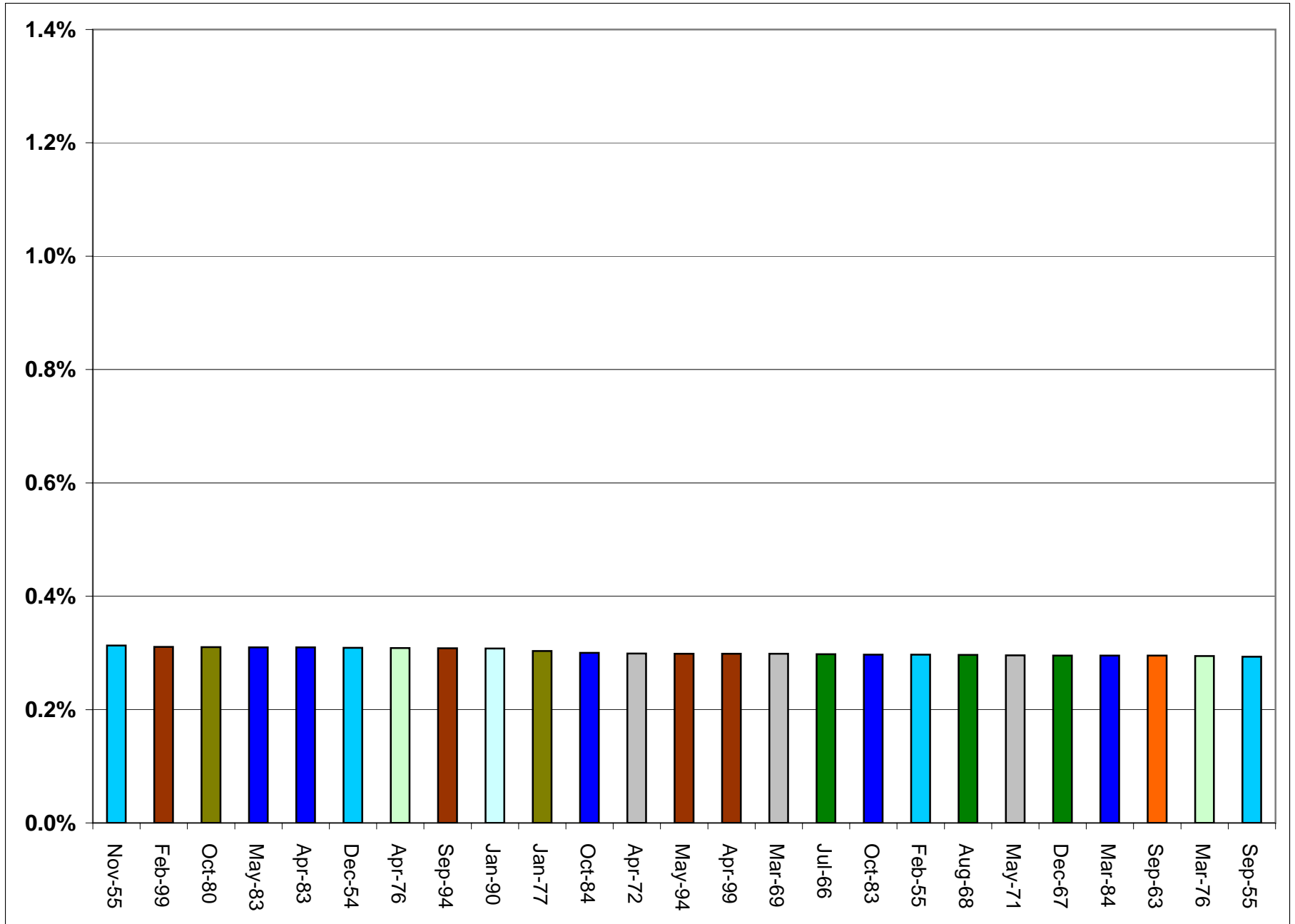
Sixth Best 25 Months of Job Growth During Last 25 Years

(Where is the Yellow???)



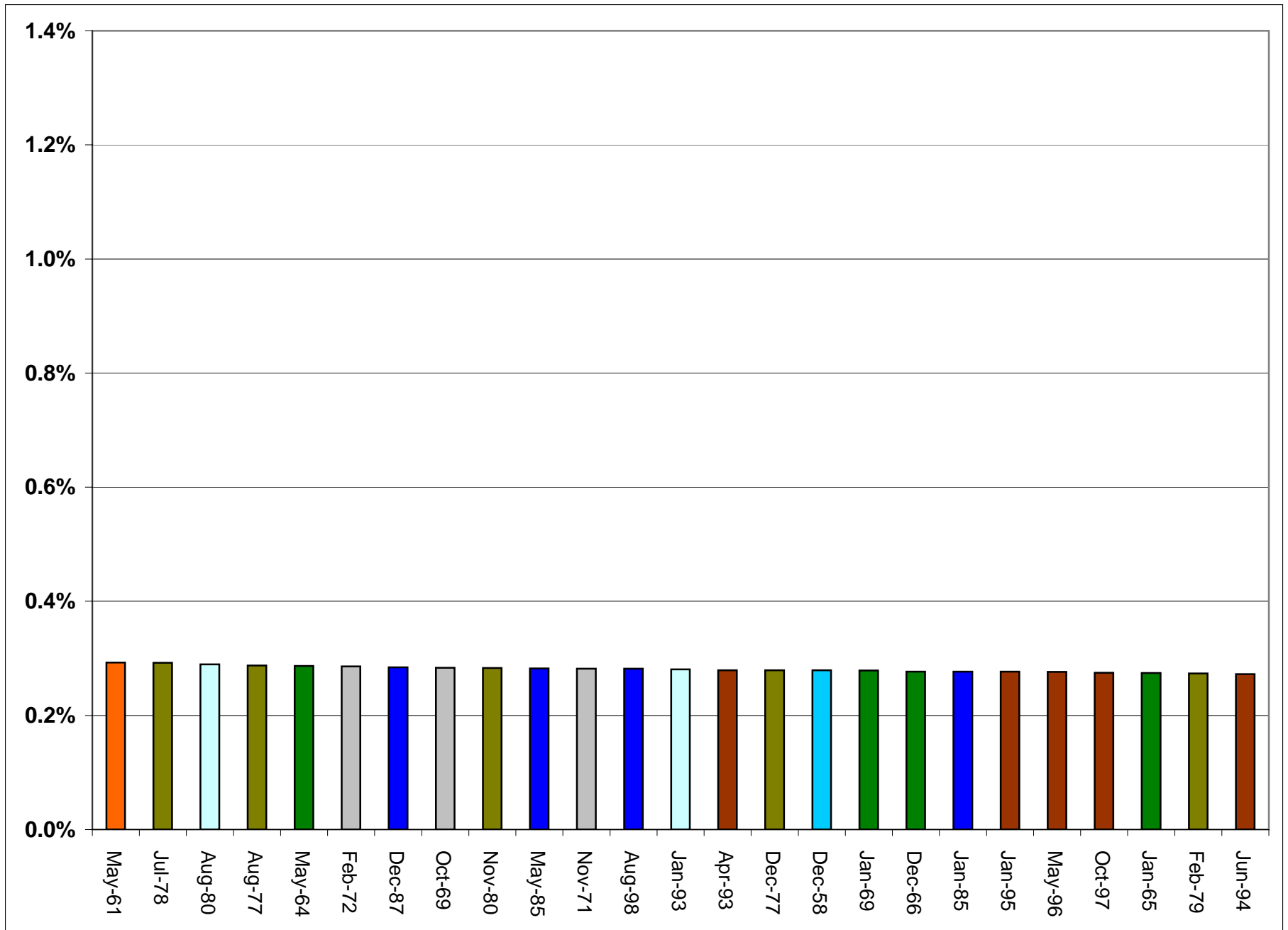
Seventh Best 25 Months of Job Growth During Last 50 Years

(There's Got to Be a Yellow Bar Some Where on These Pages)



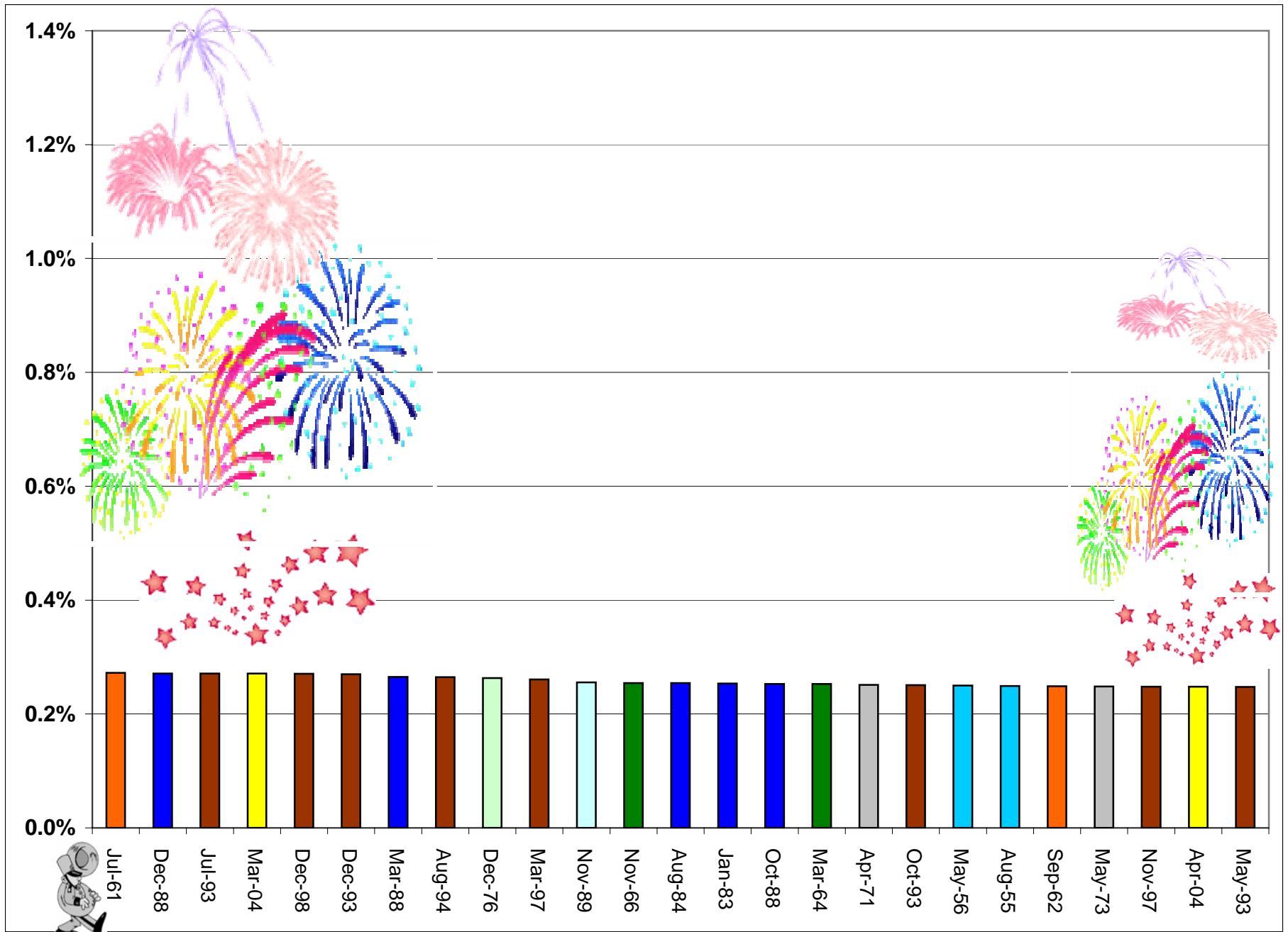
Eighth Best 25 Months of Job Growth During the Last 50 Years

(Bush Months Displayed in Yellow)



Ninth Best 25 Months of Job Growth During Last 50 Years

(Finally We Get Some Yellow)



As the analysis shows, the Heritage Foundation claim that the employment numbers released by the Labor Department this spring were the best job data in years was correct. It was to be precise the best data in four years—since March of 2000 when employment grew by 0.38% or at a pace 40% faster than in March 2004.

But the sad truth is that March 2004 employment numbers look good only when compared to other months during the Bush Administration. When compared to monthly growth over the past 50 years, it does not rate in the top 25, the top 50, the top 100 or even the top 200 months. While the Bush Administration's best month failed to make it in the top third of

months during the past 50 years, 37 of the 41 months since this administration took office fell in the bottom third. Only four months made the middle third.

A central theme of President Bush's tenure as governor of Texas was that students should not be judged against their own academic records but on the basis of strict and absolute standards of performance. The efforts of the administration and its proponents to hype the recent job numbers as 'the best number during this administration' is reminiscent of the arguments used by Governor Bush's old opponents, the backers of "social promotion" in Texas public schools.

-End-

Best to Worst Monthly Job Growth for Past 50 Years

(Monthly Employment Data from the Bureau of Labor Statistics Current Employment Survey July 1954 to June 2004)

Rank	Month	Growth <small>% over Prev Mo.</small>	Rank	Month	Growth <small>% over Prev Mo.</small>	Rank	Month	Growth <small>% over Prev Mo.</small>
1	Aug-56	1.31%	68	Nov-76	0.42%	135	Oct-99	0.33%
2	Sep-83	1.24%	69	Mar-94	0.42%	136	Jul-75	0.33%
3	Dec-59	1.01%	70	Dec-55	0.41%	137	Aug-61	0.32%
4	Nov-58	0.89%	71	Sep-97	0.41%	138	Oct-66	0.32%
5	Apr-78	0.82%	72	Nov-61	0.41%	139	Sep-88	0.32%
6	Jan-59	0.75%	73	Dec-72	0.41%	140	Jul-86	0.32%
7	Nov-67	0.72%	74	Mar-72	0.40%	141	Aug-66	0.32%
8	Nov-64	0.72%	75	Jun-84	0.40%	142	May-98	0.32%
9	Apr-60	0.65%	76	May-78	0.40%	143	Dec-78	0.32%
10	Mar-55	0.64%	77	Jun-72	0.40%	144	Nov-88	0.32%
11	Mar-66	0.63%	78	Feb-57	0.40%	145	Jan-67	0.32%
12	Jan-76	0.63%	79	Feb-76	0.40%	146	Aug-78	0.32%
13	Jun-66	0.63%	80	Feb-59	0.39%	147	Apr-94	0.32%
14	Mar-59	0.62%	81	Nov-72	0.39%	148	Jul-94	0.31%
15	Feb-68	0.61%	82	Oct-75	0.39%	149	Oct-77	0.31%
16	Mar-78	0.60%	83	Nov-73	0.39%	150	Jun-73	0.31%
17	Apr-62	0.59%	84	Aug-69	0.39%	151	Nov-55	0.31%
18	Aug-72	0.58%	85	Apr-84	0.39%	152	Feb-99	0.31%
19	Apr-59	0.57%	86	May-65	0.39%	153	Oct-80	0.31%
20	Apr-55	0.57%	87	Apr-66	0.39%	154	May-83	0.31%
21	Sep-77	0.55%	88	Dec-83	0.39%	155	Apr-83	0.31%
22	Jun-55	0.55%	89	Aug-67	0.39%	156	Dec-54	0.31%
23	Oct-72	0.54%	90	Nov-68	0.39%	157	Apr-76	0.31%
24	Dec-70	0.54%	91	Apr-68	0.38%	158	Sep-94	0.31%
25	Feb-62	0.54%	92	Nov-83	0.38%	159	Jan-90	0.31%
26	Sep-58	0.53%	93	Aug-58	0.38%	160	Jan-77	0.30%
27	May-55	0.53%	94	Jul-55	0.38%	161	Oct-84	0.30%
28	Feb-73	0.52%	95	Oct-78	0.38%	162	Apr-72	0.30%
29	Dec-65	0.52%	96	Dec-68	0.38%	163	May-94	0.30%
30	Nov-59	0.52%	97	Mar-00	0.38%	164	Apr-99	0.30%
31	Feb-84	0.52%	98	Feb-69	0.37%	165	Mar-69	0.30%
32	Jun-78	0.51%	99	Jun-68	0.37%	166	Jul-66	0.30%
33	Aug-75	0.50%	100	Oct-65	0.37%	167	Oct-83	0.30%
34	Mar-77	0.50%	101	Feb-56	0.37%	168	Feb-55	0.30%
35	Nov-78	0.50%	102	Nov-94	0.37%	169	Aug-68	0.30%
36	Jun-77	0.49%	103	Feb-96	0.37%	170	May-71	0.30%
37	Jan-84	0.48%	104	Dec-71	0.37%	171	Dec-67	0.30%
38	Sep-64	0.48%	105	Feb-77	0.37%	172	Mar-84	0.30%
39	Nov-54	0.48%	106	May-69	0.37%	173	Sep-63	0.30%
40	Oct-87	0.48%	107	Nov-84	0.37%	174	Mar-76	0.29%
41	Mar-79	0.48%	108	Feb-65	0.36%	175	Sep-55	0.29%
42	Jan-72	0.47%	109	Oct-63	0.36%	176	May-61	0.29%
43	Jan-73	0.46%	110	Jun-61	0.36%	177	Jul-78	0.29%
44	Jul-83	0.46%	111	Mar-85	0.36%	178	Aug-80	0.29%
45	Feb-64	0.46%	112	Aug-64	0.36%	179	Aug-77	0.29%
46	Apr-63	0.46%	113	Jun-79	0.35%	180	May-64	0.29%
47	Nov-77	0.45%	114	Mar-73	0.35%	181	Feb-72	0.29%
48	Nov-65	0.45%	115	Sep-71	0.35%	182	Dec-87	0.28%
49	Jul-65	0.45%	116	Sep-86	0.35%	183	Oct-69	0.28%
50	Feb-60	0.44%	117	Jun-88	0.35%	184	Nov-80	0.28%
51	May-77	0.44%	118	Oct-56	0.34%	185	May-85	0.28%
52	Jun-69	0.44%	119	Dec-64	0.34%	186	Nov-71	0.28%
53	Feb-88	0.44%	120	Oct-68	0.34%	187	Aug-98	0.28%
54	Dec-75	0.44%	121	Jul-87	0.34%	188	Jan-93	0.28%
55	Aug-65	0.43%	122	Mar-65	0.34%	189	Apr-93	0.28%
56	May-66	0.43%	123	Jan-55	0.34%	190	Dec-77	0.28%
57	May-59	0.43%	124	Apr-87	0.33%	191	Dec-58	0.28%
58	Feb-66	0.43%	125	Jan-66	0.33%	192	Jan-69	0.28%
59	Sep-65	0.43%	126	Aug-73	0.33%	193	Dec-66	0.28%
60	Apr-65	0.42%	127	Jul-84	0.33%	194	Jan-85	0.28%
61	Jul-77	0.42%	128	Oct-55	0.33%	195	Jan-95	0.28%
62	Jun-83	0.42%	129	May-84	0.33%	196	May-96	0.28%
63	Oct-73	0.42%	130	Jan-56	0.33%	197	Oct-97	0.27%
64	Feb-78	0.42%	131	Jul-64	0.33%	198	Jan-65	0.27%
65	Apr-77	0.42%	132	Sep-84	0.33%	199	Feb-79	0.27%
66	May-79	0.42%	133	Jun-65	0.33%	200	Jun-94	0.27%
67	May-72	0.42%	134	Jul-68	0.33%			

Best to Worst Monthly Job Growth for Past 50 Years

(Monthly Employment Data from the Bureau of Labor Statistics Current Employment Survey July 1954 to June 2004)

Rank	Month	Growth <small>% over Prev Mo.</small>	Rank	Month	Growth <small>% over Prev Mo.</small>	Rank	Month	Growth <small>% over Prev Mo.</small>
201	Jul-61	0.27%	268	Feb-93	0.22%	335	Sep-61	0.16%
202	Dec-88	0.27%	269	Sep-93	0.22%	336	Mar-63	0.16%
203	Jul-93	0.27%	270	Jan-98	0.22%	337	Dec-73	0.16%
204	Mar-04	0.27%	271	Mar-96	0.21%	338	Mar-62	0.16%
205	Dec-98	0.27%	272	Dec-80	0.21%	339	Apr-89	0.16%
206	Dec-93	0.27%	273	Jun-81	0.21%	340	Oct-92	0.16%
207	Mar-88	0.26%	274	May-97	0.21%	341	Jan-63	0.16%
208	Aug-94	0.26%	275	Jul-76	0.21%	342	Mar-67	0.16%
209	Dec-76	0.26%	276	Sep-66	0.21%	343	Sep-78	0.16%
210	Mar-97	0.26%	277	Dec-69	0.21%	344	Jan-79	0.15%
211	Nov-89	0.26%	278	Nov-85	0.21%	345	Apr-57	0.15%
212	Nov-66	0.25%	279	Jul-88	0.21%	346	Apr-56	0.15%
213	Aug-84	0.25%	280	Mar-70	0.21%	347	Oct-98	0.15%
214	Jan-83	0.25%	281	May-75	0.21%	348	Aug-99	0.15%
215	Oct-88	0.25%	282	Sep-85	0.21%	349	Jun-85	0.15%
216	Mar-64	0.25%	283	Jul-67	0.21%	350	Sep-73	0.15%
217	Apr-71	0.25%	284	May-74	0.21%	351	Jan-00	0.15%
218	Oct-93	0.25%	285	Feb-63	0.20%	352	Feb-98	0.15%
219	May-56	0.25%	286	Dec-56	0.20%	353	Jun-93	0.15%
220	Aug-55	0.25%	287	Dec-86	0.20%	354	Jun-56	0.15%
221	Sep-62	0.25%	288	Sep-95	0.20%	355	Dec-96	0.15%
222	May-73	0.25%	289	Aug-63	0.20%	356	Sep-99	0.14%
223	Nov-97	0.25%	290	Mar-90	0.20%	357	Jan-80	0.14%
224	Apr-04	0.25%	291	Apr-85	0.20%	358	Apr-92	0.14%
225	May-93	0.25%	292	Jun-67	0.20%	359	May-68	0.14%
226	Mar-87	0.25%	293	Jun-97	0.20%	360	Aug-93	0.14%
227	Oct-61	0.25%	294	Jun-99	0.20%	361	Apr-95	0.14%
228	Jul-58	0.25%	295	Aug-76	0.20%	362	Apr-96	0.14%
229	Mar-56	0.25%	296	Mar-61	0.20%	363	Nov-00	0.14%
230	Jan-89	0.25%	297	Oct-96	0.20%	364	May-90	0.14%
231	Feb-97	0.24%	298	Aug-85	0.20%	365	Jul-69	0.13%
232	Nov-96	0.24%	299	Dec-92	0.20%	366	Dec-84	0.13%
233	Jul-63	0.24%	300	Mar-83	0.19%	367	Nov-92	0.13%
234	Jun-59	0.24%	301	Jun-95	0.19%	368	Oct-54	0.13%
235	Feb-89	0.24%	302	Jul-85	0.19%	369	Feb-85	0.13%
236	Jan-94	0.24%	303	Oct-85	0.19%	370	Oct-95	0.13%
237	Dec-97	0.24%	304	Feb-74	0.19%	371	May-86	0.13%
238	Apr-97	0.24%	305	Jul-96	0.19%	372	Aug-92	0.13%
239	Apr-69	0.24%	306	Apr-86	0.19%	373	Sep-80	0.13%
240	Aug-95	0.24%	307	Jan-97	0.19%	374	Jan-86	0.12%
241	Sep-76	0.24%	308	Mar-95	0.19%	375	Mar-80	0.12%
242	Nov-93	0.24%	309	Oct-86	0.19%	376	Jul-81	0.12%
243	Apr-88	0.23%	310	Nov-86	0.19%	377	Jan-04	0.12%
244	Apr-00	0.23%	311	Nov-75	0.19%	378	Nov-95	0.12%
245	Dec-61	0.23%	312	Dec-63	0.18%	379	Mar-68	0.12%
246	Dec-94	0.23%	313	Jul-62	0.18%	380	Jul-00	0.12%
247	Jul-59	0.23%	314	Jan-60	0.18%	381	Mar-98	0.12%
248	Sep-68	0.23%	315	Sep-96	0.18%	382	Dec-95	0.12%
249	Feb-90	0.23%	316	Feb-95	0.18%	383	Jul-79	0.12%
250	May-67	0.23%	317	May-04	0.18%	384	May-92	0.12%
251	Feb-87	0.23%	318	Oct-94	0.18%	385	Sep-54	0.11%
252	Sep-89	0.23%	319	Mar-89	0.18%	386	Aug-88	0.11%
253	Jul-99	0.23%	320	Feb-70	0.18%	387	Oct-62	0.11%
254	Jun-64	0.23%	321	Sep-72	0.18%	388	Mar-81	0.11%
255	Nov-99	0.23%	322	May-00	0.18%	389	Apr-74	0.11%
256	Jun-96	0.23%	323	Sep-98	0.17%	390	Aug-86	0.11%
257	Dec-99	0.23%	324	Oct-79	0.17%	391	Feb-00	0.11%
258	Jul-97	0.23%	325	Feb-94	0.17%	392	May-89	0.11%
259	Nov-98	0.22%	326	Dec-85	0.17%	393	Mar-57	0.11%
260	Nov-87	0.22%	327	Sep-59	0.17%	394	Jun-89	0.11%
261	May-87	0.22%	328	Jan-87	0.17%	395	Feb-86	0.11%
262	Sep-87	0.22%	329	Aug-96	0.17%	396	Jan-71	0.11%
263	Apr-73	0.22%	330	Jun-87	0.17%	397	Jul-57	0.11%
264	Apr-98	0.22%	331	May-99	0.17%	398	Dec-79	0.10%
265	Jan-78	0.22%	332	Aug-87	0.17%	399	Jan-81	0.10%
266	Jan-64	0.22%	333	Aug-62	0.17%	400	Nov-79	0.10%
267	May-88	0.22%	334	Jun-98	0.16%			

Best to Worst Monthly Job Growth for Past 50 Years

(Monthly Employment Data from the Bureau of Labor Statistics Current Employment Survey July 1954 to June 2004)

Rank	Month	Growth <small>% over Prev Mo.</small>	Rank	Month	Growth <small>% over Prev Mo.</small>	Rank	Month	Growth <small>% over Prev Mo.</small>
401	Oct-89	0.10%	468	Aug-57	0.01%	535	Sep-69	-0.12%
402	Sep-75	0.10%	469	May-81	0.01%	536	Jan-02	-0.13%
403	Mar-99	0.10%	470	Aug-02	0.01%	537	Jul-54	-0.13%
404	Jul-98	0.10%	471	Jun-71	0.01%	538	Oct-59	-0.13%
405	Mar-86	0.09%	472	Oct-91	0.01%	539	Jun-70	-0.13%
406	Dec-00	0.09%	473	Dec-03	0.01%	540	Nov-90	-0.13%
407	Oct-67	0.09%	474	May-02	0.00%	541	Jun-75	-0.14%
408	Aug-79	0.09%	475	May-01	0.00%	542	Nov-82	-0.14%
409	Jan-88	0.09%	476	Jun-58	0.00%	543	Jan-68	-0.14%
410	Jan-99	0.09%	477	Aug-97	-0.01%	544	Mar-82	-0.14%
411	Jan-74	0.09%	478	Sep-74	-0.01%	545	Mar-91	-0.14%
412	Jul-71	0.09%	479	Feb-82	-0.01%	546	Apr-70	-0.15%
413	Dec-89	0.09%	480	May-95	-0.01%	547	Oct-90	-0.15%
414	Feb-80	0.09%	481	Jun-03	-0.01%	548	Oct-60	-0.15%
415	Jun-04	0.09%	482	Jan-96	-0.02%	549	Nov-70	-0.16%
416	Jun-76	0.08%	483	Apr-03	-0.02%	550	Jun-57	-0.16%
417	Apr-81	0.08%	484	Dec-82	-0.02%	551	Apr-80	-0.16%
418	Feb-01	0.08%	485	Aug-54	-0.02%	552	Dec-02	-0.16%
419	Nov-56	0.08%	486	Jun-00	-0.02%	553	Dec-01	-0.16%
420	Mar-71	0.08%	487	Aug-74	-0.02%	554	May-57	-0.17%
421	Jun-63	0.07%	488	Aug-03	-0.02%	555	Aug-70	-0.17%
422	Jun-91	0.07%	489	Aug-00	-0.02%	556	Aug-82	-0.18%
423	Feb-81	0.07%	490	May-03	-0.02%	557	Oct-64	-0.19%
424	Aug-71	0.07%	491	Nov-02	-0.03%	558	Aug-90	-0.19%
425	Jan-03	0.07%	492	Jul-03	-0.03%	559	Apr-91	-0.20%
426	Jun-74	0.07%	493	Sep-02	-0.04%	560	Sep-01	-0.20%
427	Jul-92	0.07%	494	Aug-81	-0.04%	561	Sep-82	-0.20%
428	Oct-03	0.07%	495	Jan-01	-0.04%	562	Apr-01	-0.20%
429	Sep-00	0.07%	496	Oct-58	-0.04%	563	May-58	-0.22%
430	Nov-03	0.06%	497	Mar-93	-0.04%	564	Nov-81	-0.23%
431	Feb-04	0.06%	498	Jul-90	-0.04%	565	Jun-60	-0.23%
432	Oct-02	0.06%	499	Nov-69	-0.04%	566	Feb-61	-0.24%
433	May-63	0.06%	500	Jul-91	-0.05%	567	Apr-75	-0.24%
434	Jul-95	0.06%	501	May-82	-0.05%	568	Nov-01	-0.25%
435	Mar-92	0.05%	502	Dec-62	-0.05%	569	Jun-82	-0.27%
436	Mar-74	0.05%	503	Nov-63	-0.05%	570	Oct-01	-0.27%
437	Sep-03	0.05%	504	Apr-02	-0.05%	571	Feb-91	-0.28%
438	Jun-92	0.05%	505	Dec-90	-0.05%	572	Jul-80	-0.29%
439	Jan-92	0.05%	506	Nov-91	-0.05%	573	Dec-81	-0.30%
440	May-62	0.04%	507	Aug-60	-0.06%	574	Oct-82	-0.31%
441	Aug-89	0.04%	508	Sep-56	-0.06%	575	Apr-82	-0.31%
442	Apr-64	0.04%	509	Feb-92	-0.07%	576	Oct-57	-0.32%
443	Jul-74	0.04%	510	Apr-61	-0.07%	577	May-70	-0.32%
444	Jul-70	0.04%	511	Feb-02	-0.07%	578	Dec-57	-0.33%
445	Jan-62	0.04%	512	Jul-72	-0.07%	579	Nov-60	-0.34%
446	Jul-89	0.04%	513	Apr-79	-0.07%	580	Aug-83	-0.34%
447	Sep-92	0.03%	514	Sep-90	-0.08%	581	Mar-75	-0.35%
448	Mar-02	0.03%	515	Jan-57	-0.08%	582	Jun-80	-0.35%
449	Jul-73	0.03%	516	Jul-60	-0.08%	583	Jan-82	-0.36%
450	Jun-62	0.03%	517	Sep-60	-0.08%	584	Sep-57	-0.37%
451	Sep-67	0.03%	518	Mar-03	-0.08%	585	Jul-82	-0.38%
452	Apr-90	0.03%	519	Jul-02	-0.09%	586	Nov-57	-0.39%
453	Oct-71	0.03%	520	Feb-71	-0.09%	587	Dec-60	-0.41%
454	Feb-67	0.03%	521	Jul-01	-0.09%	588	Jan-75	-0.46%
455	Sep-91	0.03%	522	Feb-83	-0.09%	589	Nov-74	-0.47%
456	Sep-79	0.03%	523	Jan-70	-0.09%	590	May-80	-0.47%
457	Nov-62	0.02%	524	Jun-86	-0.09%	591	Feb-75	-0.49%
458	Dec-91	0.02%	525	Sep-81	-0.10%	592	Apr-58	-0.53%
459	Sep-70	0.02%	526	Apr-67	-0.10%	593	Mar-58	-0.54%
460	Oct-00	0.02%	527	Mar-60	-0.10%	594	Jan-58	-0.59%
461	May-76	0.02%	528	Aug-01	-0.11%	595	Oct-70	-0.61%
462	Jun-02	0.02%	529	Oct-81	-0.11%	596	May-60	-0.62%
463	Aug-91	0.02%	530	Jan-91	-0.11%	597	Dec-74	-0.77%
464	Jun-90	0.02%	531	Jan-61	-0.11%	598	Aug-59	-0.87%
465	Oct-74	0.02%	532	May-91	-0.11%	599	Feb-58	-0.96%
466	Oct-76	0.02%	533	Jun-01	-0.11%	600	Jul-56	-1.20%
467	Mar-01	0.01%	534	Feb-03	-0.12%			