

Don't Rob "Poor" Peter to
Pay "Poor" Paul

The Biggest Salary Inequities Are Within Districts, Not Between Them

	High Revenue ("Wealthy")	Low Revenue ("Poor")
Non Title I Schools	\$47,855	\$36,163
Title I Schools	\$47,438	\$33,047

U.S. Department of Education and American Institutes of Research, *Study of Education Resources and Federal Funding- Final Report*, Table IV-9, p. 61, (Washington D.C. August 2000).

There Are No “Low-Poverty” Schools in High-Poverty Urban School Districts

Percent Eligible for Free or Reduced-Price Lunch			
Poverty Quartile	Low	Med.	High
	Q1	Q2-Q3	Q4
Chicago	<83%	83-96%	>96%

Source: Illinois Education Research Council ,
Project funded by The Education Trust

“Low–Poverty” Schools in Chicago Would Be High-Poverty Schools in the Suburbs

Percent Eligible for Free or Reduced-Price Lunch			
Poverty Quartile	Low	Med.	High
	Q1	Q2-Q3	Q4
Chicago	<83%	83-96%	>96%
Northeast Illinois Excluding Chicago	<3%	3-31%	>31%

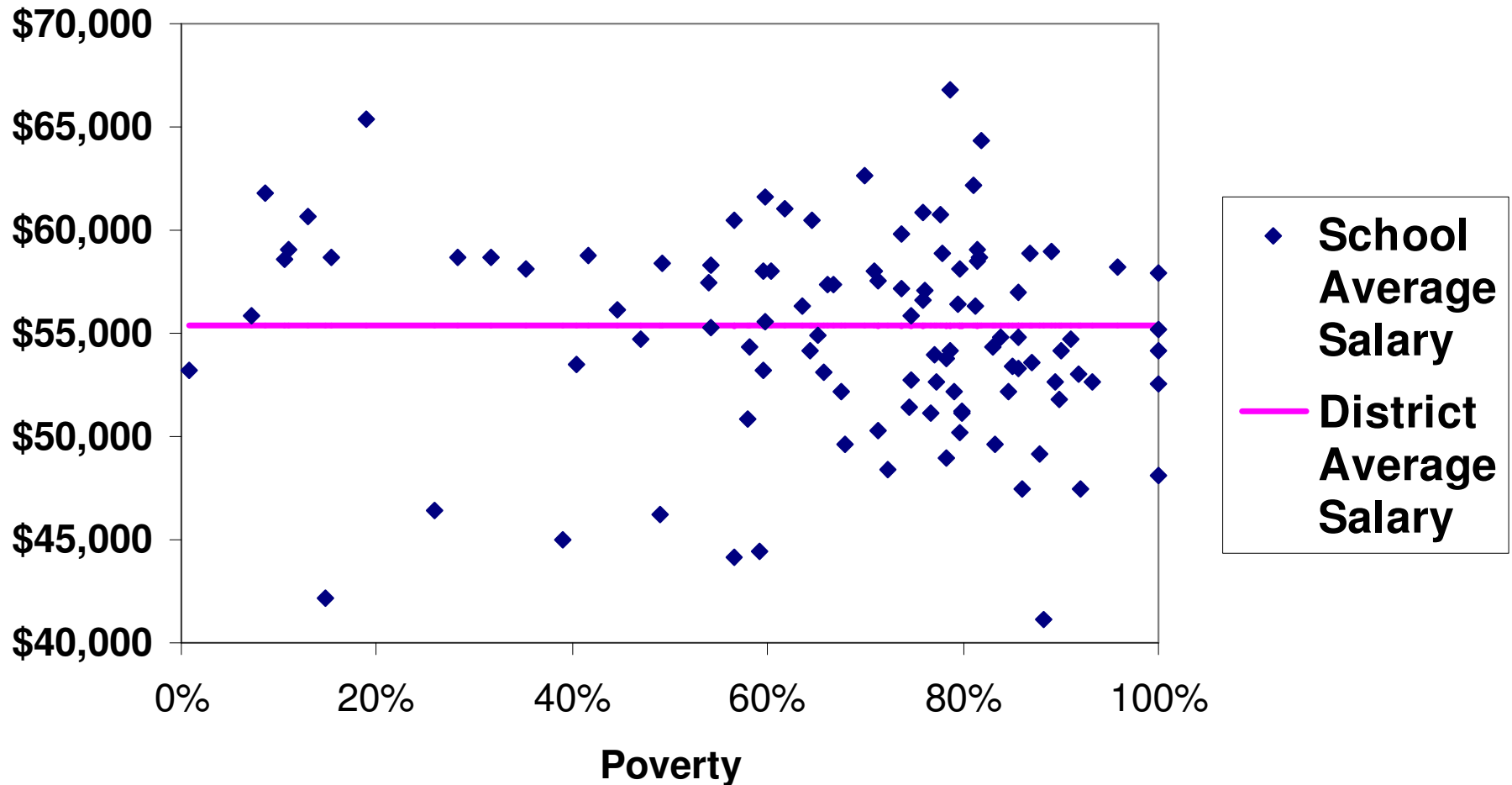
Source: Illinois Education Research Council ,
Project funded by The Education Trust

Low-poverty Schools in a Poor District Would Be Considered High-Poverty in a Wealthier District

Percent Eligible for Free or Reduced-Price Lunch			
Poverty Quartile	Low	Med.	High
	Q1	Q2-Q3	Q4
Los Angeles	<69%	69-93%	>93%
Oakland	<59%	59-83%	>83%
San Juan	<12%	12-47%	>47%

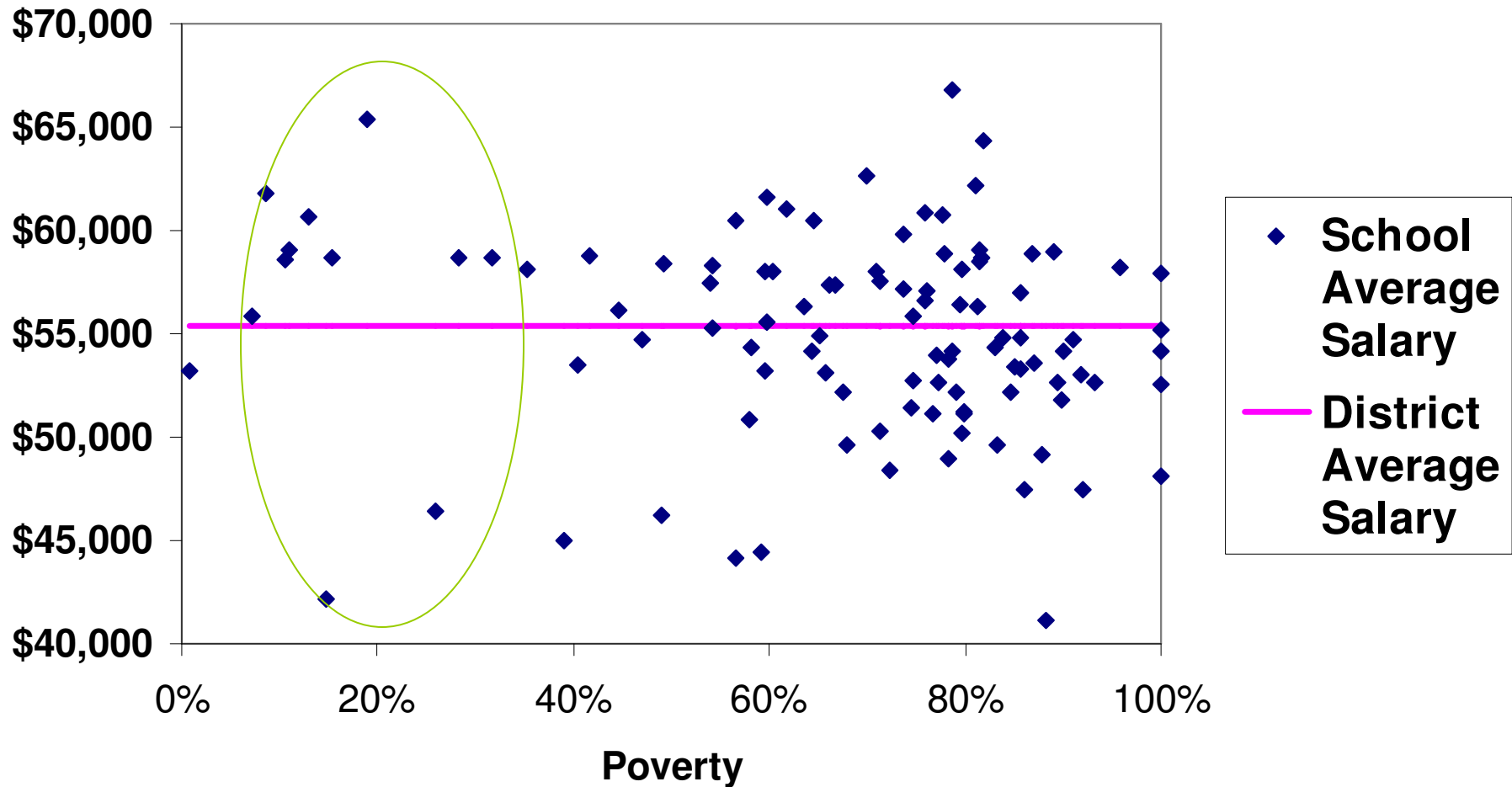
Source: Reanalysis of school-level data compiled by The Education Trust-West

Oakland: Average Actual Salaries Vary A Lot Across Schools

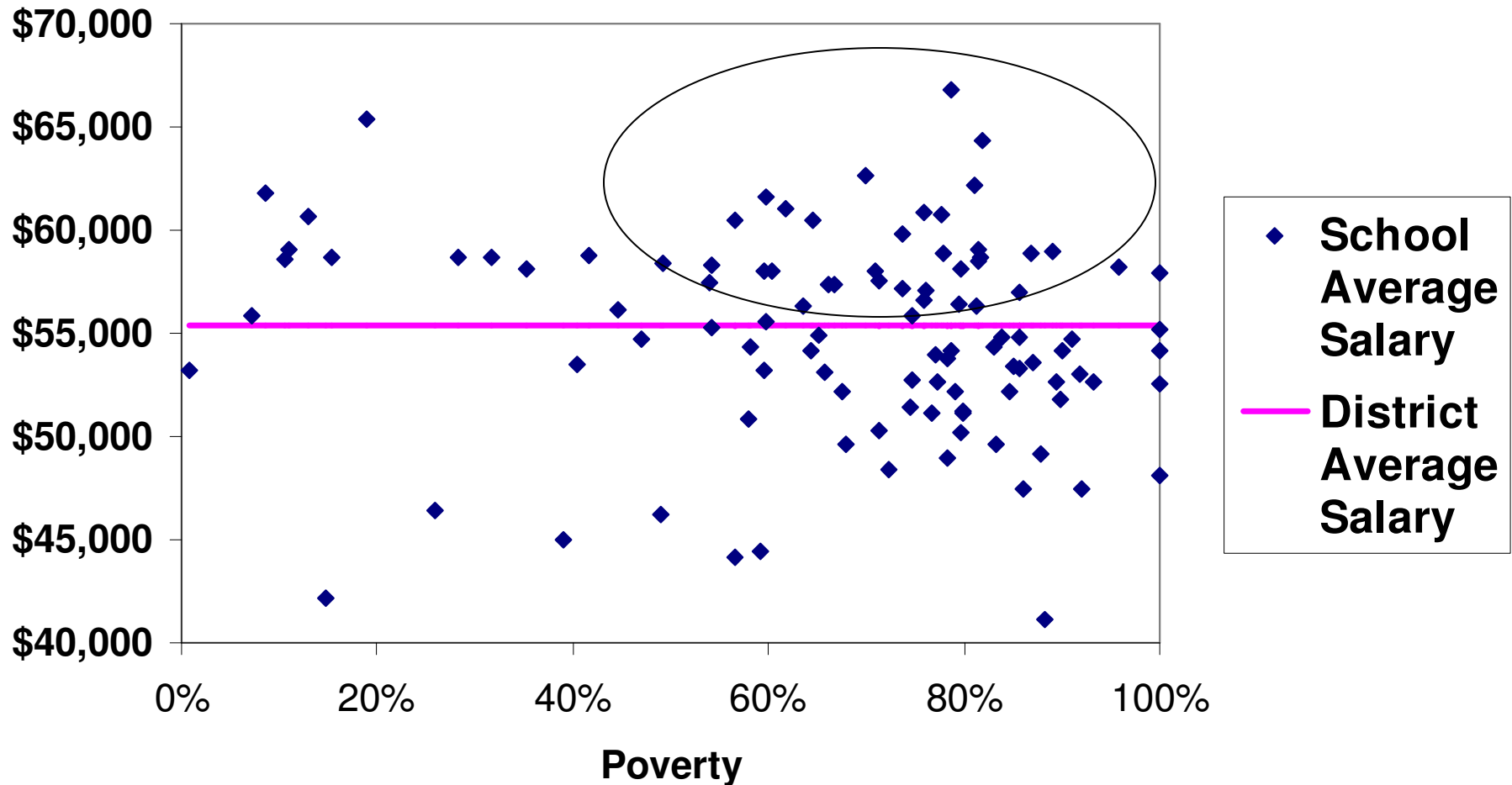


Source: Reanalysis of school-level data compiled by The Education Trust-West

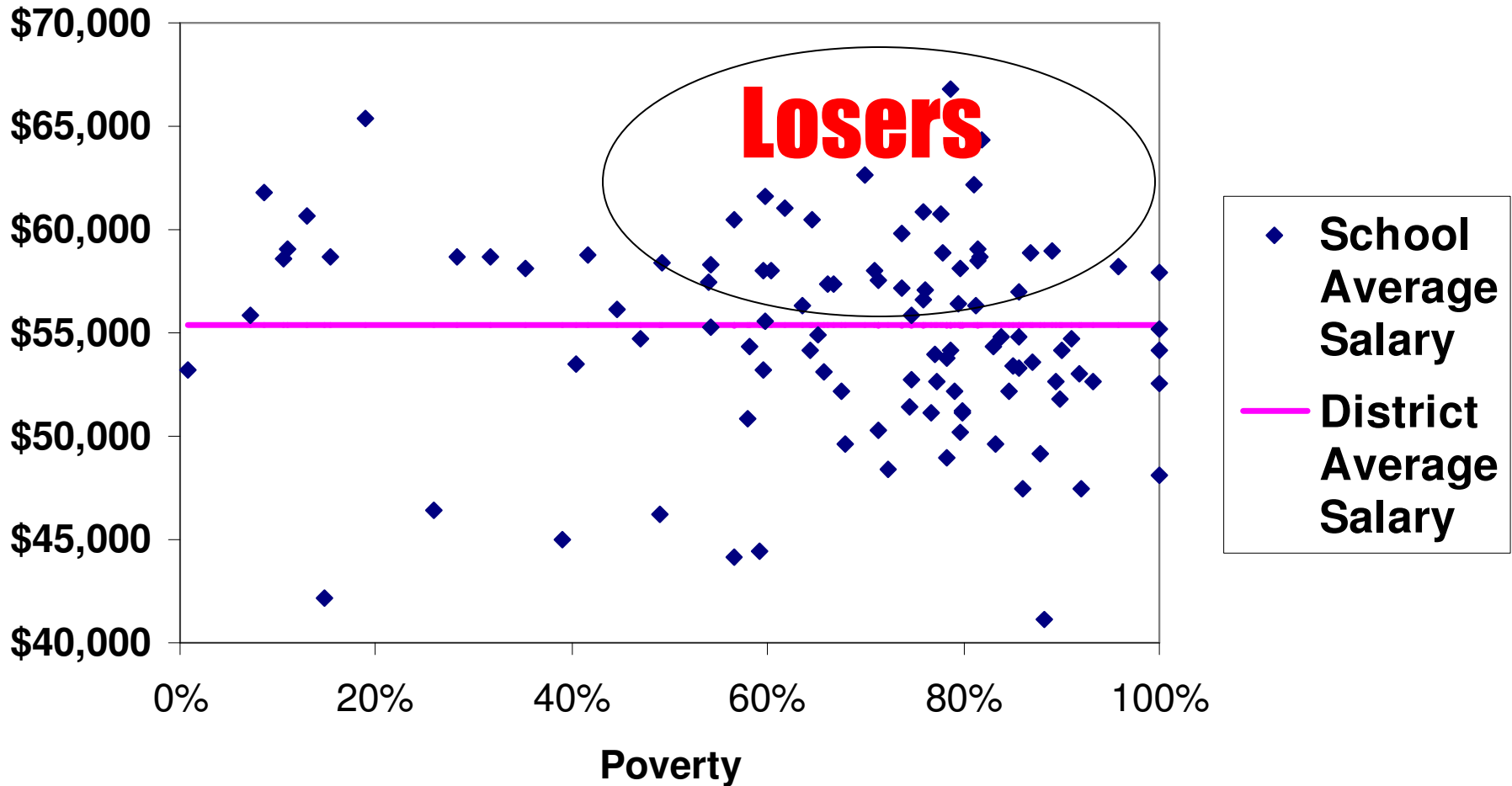
Oakland: Relatively Low-Poverty Schools Tend to Have Higher Average Actual Salaries . . .



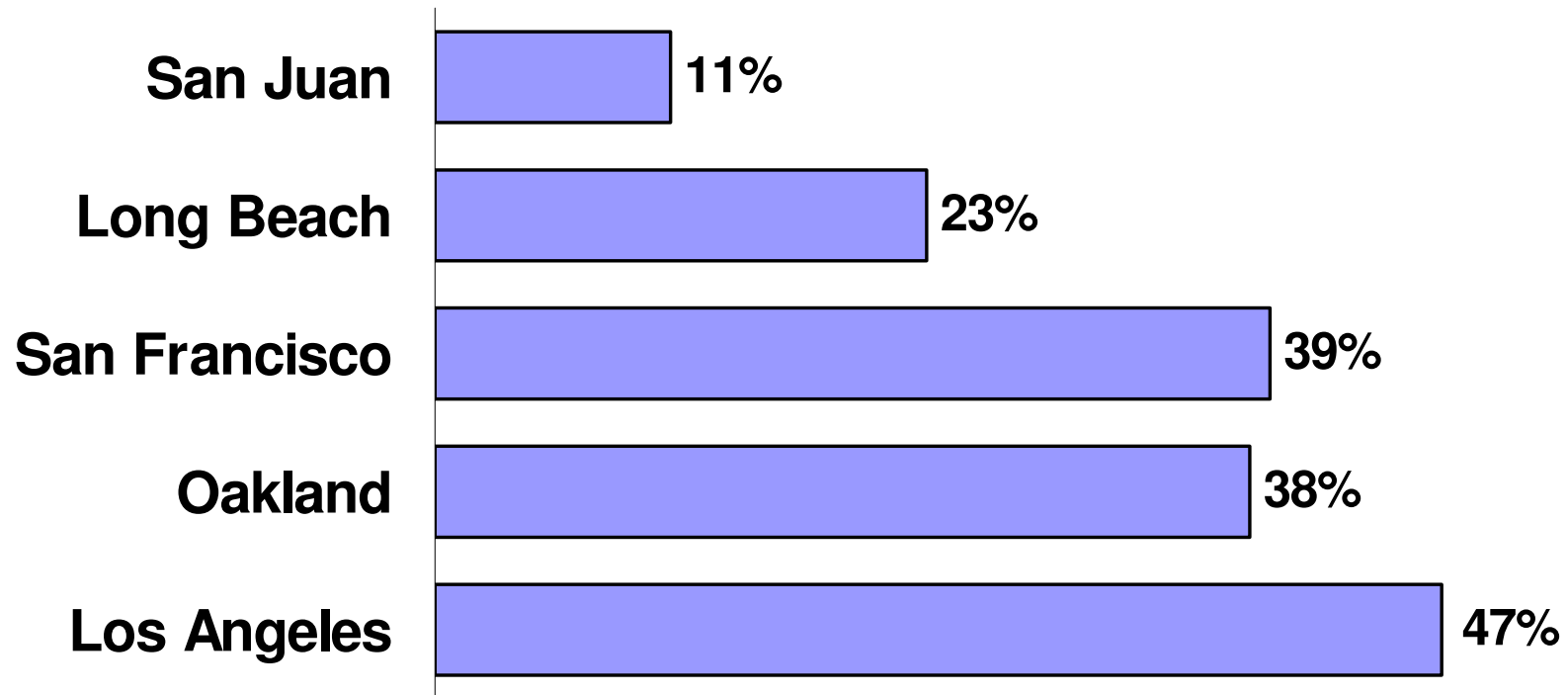
BUT Most Schools with High Average Actual Teacher Salaries are High-Poverty Schools (Oakland)



Under “Strict” Comparability, Many, Many High-Poverty Schools Will Lose Their Experienced Teachers (Oakland)



More High Poverty Schools Are “Losers” in Poorest School Districts

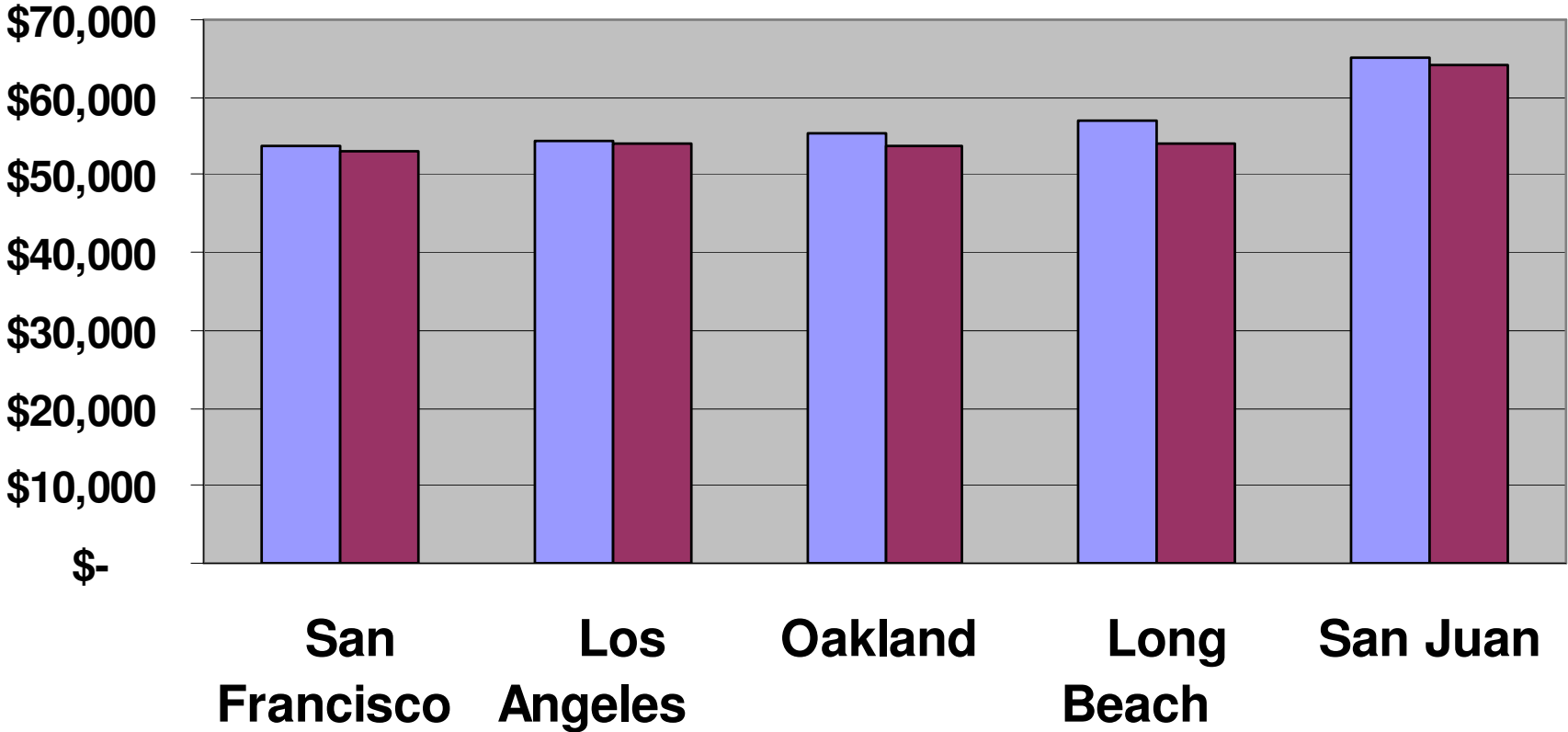


Percent of High-Poverty Schools (>75 percent) Losing Resources

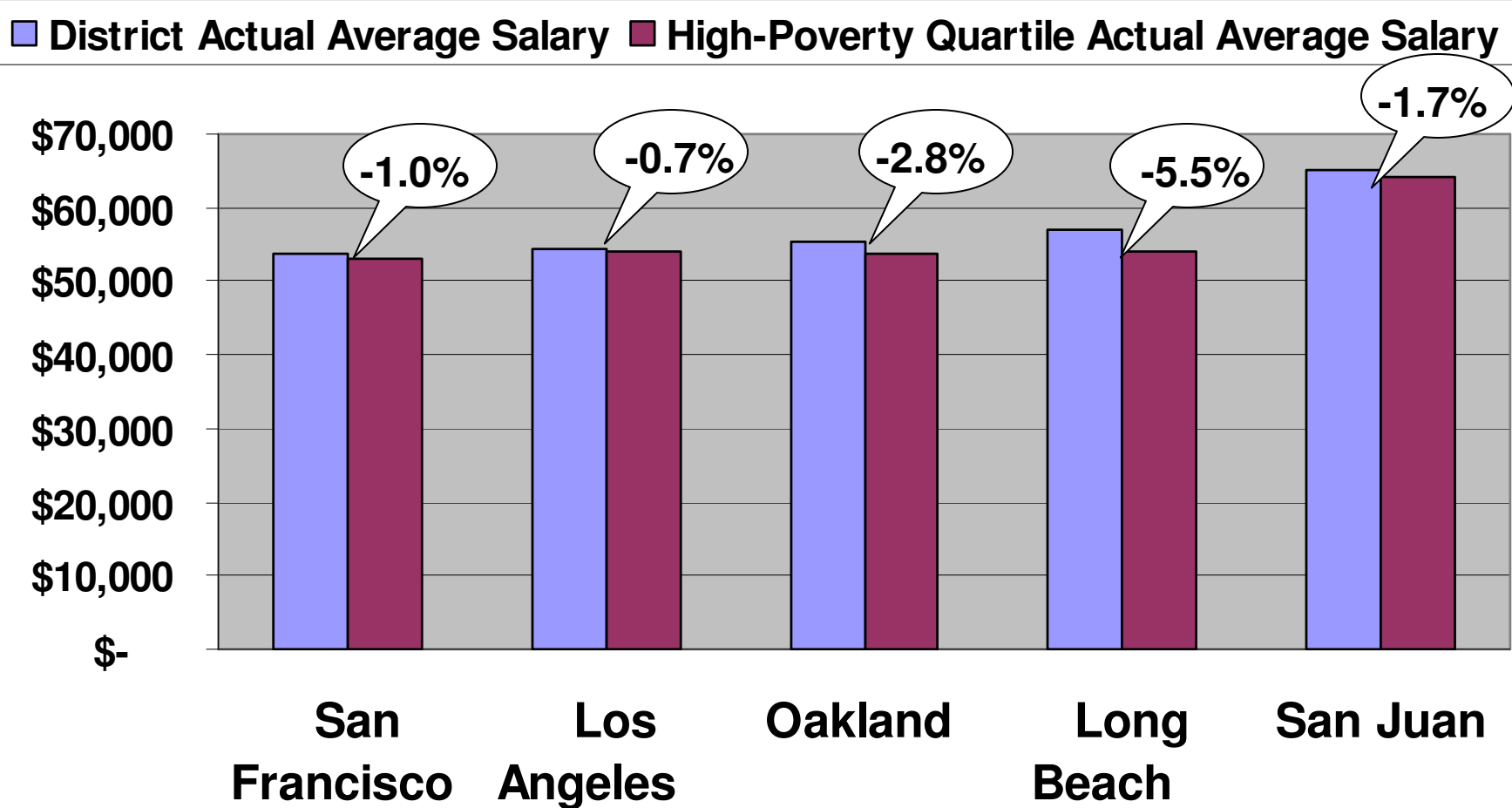
Source: Reanalysis of school-level data compiled by The Education Trust-West

Actual School Average Salaries in High Poverty Schools Almost the Same as the District Average

■ District Actual Average Salary ■ High-Poverty Quartile Actual Average Salary



Actual School Average Salaries in High Poverty Schools Almost the Same as the District Average



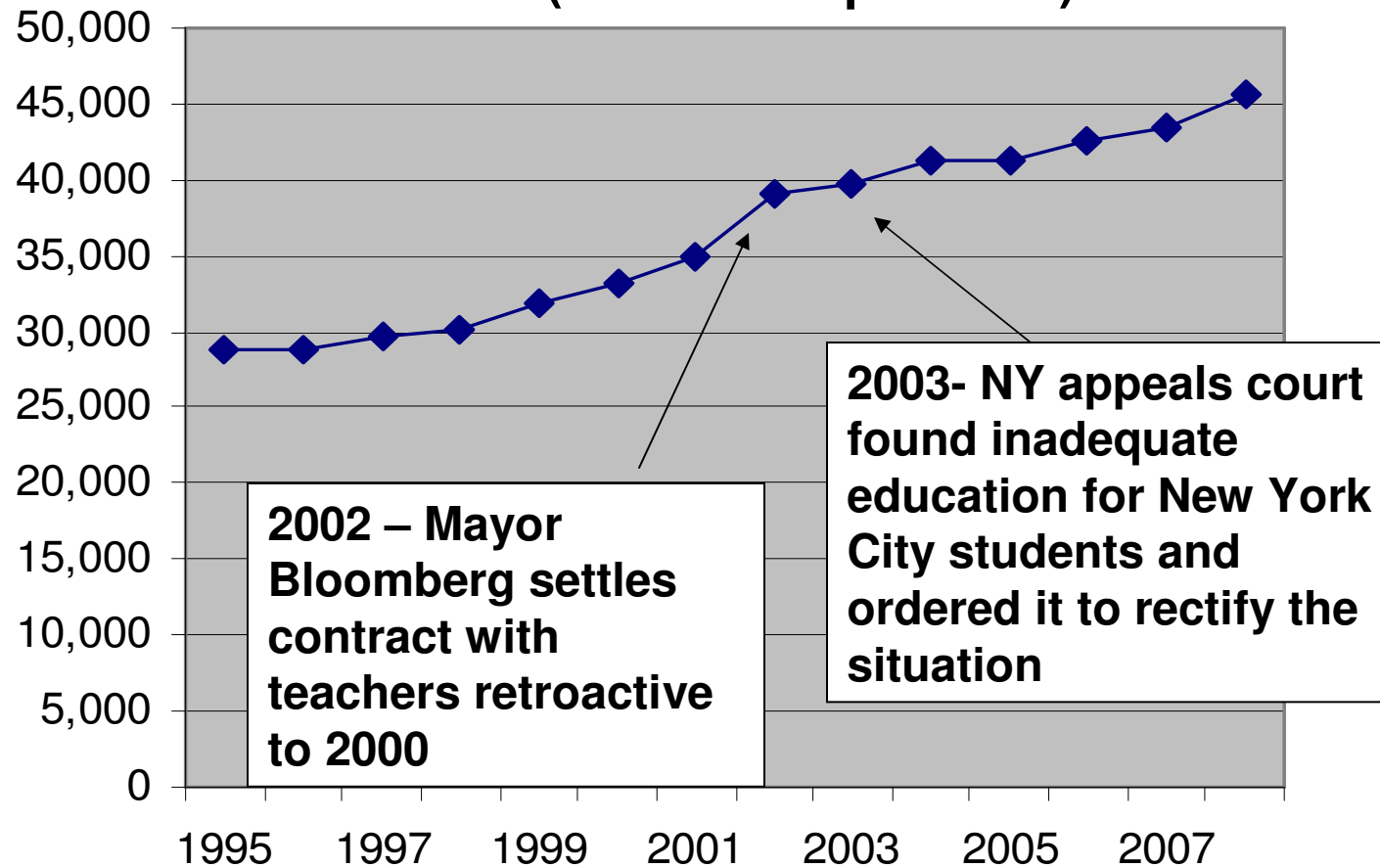
Between District Salary Inequalities Are a Bigger Problem Than Within District Inequalities

	High Revenue ("Wealthy")	Low Revenue ("Poor")
Non Title I Schools	\$47,855	\$36,163
Title I Schools	\$47,438	\$33,047

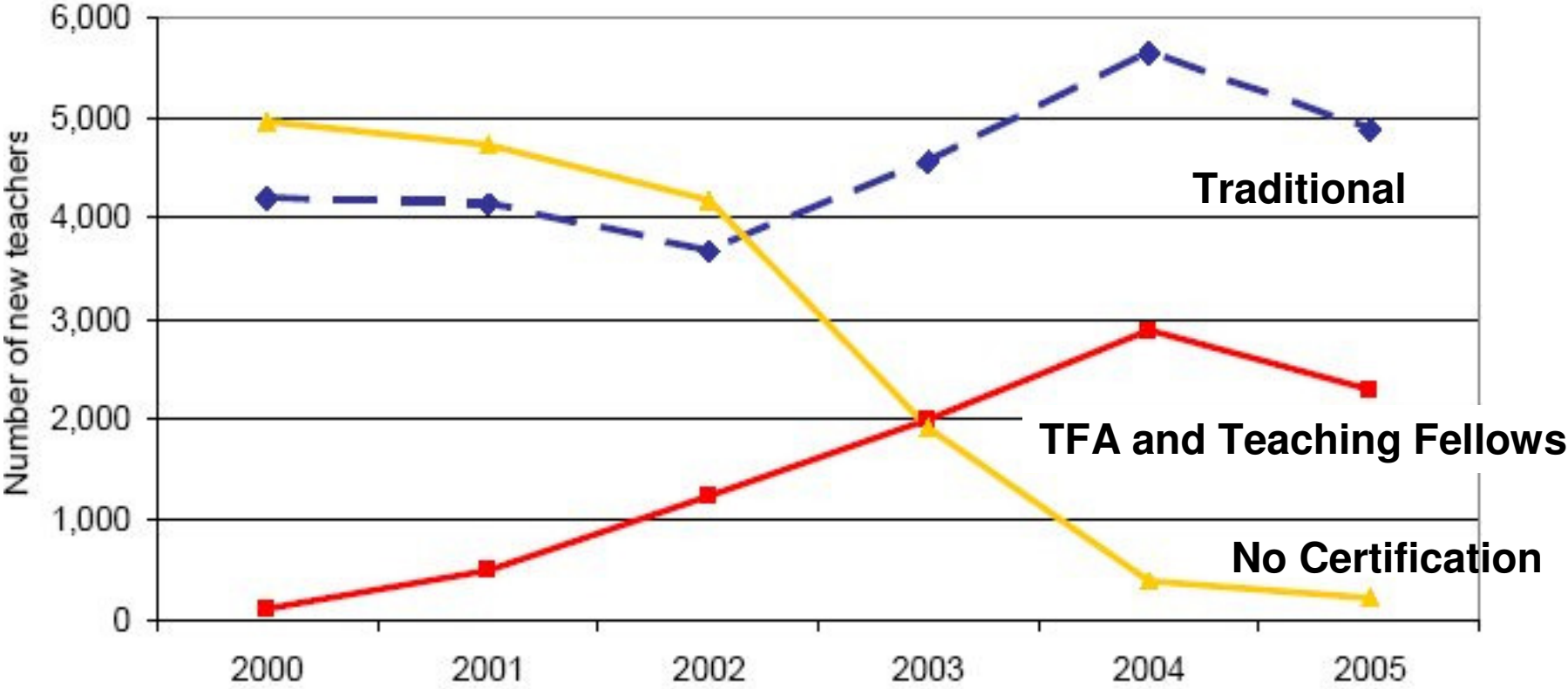
U.S. Department of Education and American Institutes of Research,
Study of Education Resources and Federal Funding- Final Report,
 Table IV-9, p. 61, (Washington D.C. August 2000).

New York City: Teacher Salaries Are Way up, Thanks in Part to Adequacy Lawsuit

(BA – No Experience)

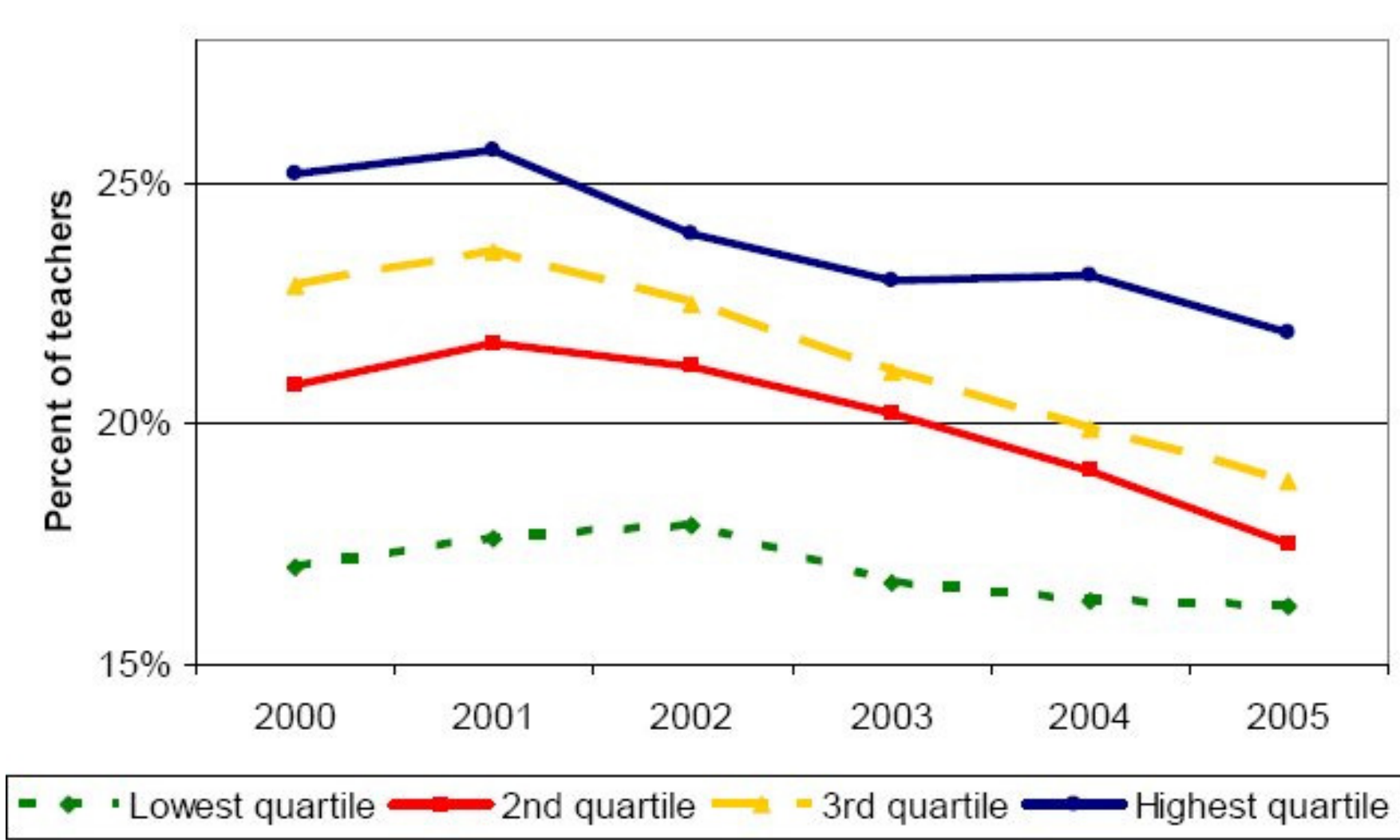


Helped by Salary Increases, Hiring of Uncertified Teachers Was Virtually Eliminated



Source: Boyd, Lankford, Loeb, Rockoff and Wyckoff (2007). *The Narrowing Gap in New York City Teacher Qualifications and its Implications for Student Achievement in High-Poverty Schools.*

Helped by Salary Increases, High-Poverty Schools Have Fewer Novice (First Two Years) Teachers



... and Passing Rates on Teacher Exams Improved Dramatically

LAST Exam Failure Rate of New Teachers

